

FS 60+

DATA SHEET

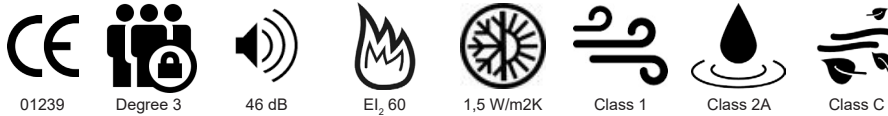
Tel. +34 673 273 942
info@acoraval.com
www.acoraval.com

ACORAVAL
High Security Armoured Doors

PERFORMANCES

- P1 Resistance to anti-burglary EN 1627 / EN 85160
- P2 Acoustic Insulation EN ISO 10140-2 (Rw)
- P3 Fire Resistance EN 1634-1 (E_{l,2} minutes)
- P4 Thermal Insulation EN ISO 10077-1 (Ud)
- P5 Air Permeability EN 1026
- P6 Water tightness EN 1027
- P7 Wind load resistance EN 12211

Degree 3
46 dB
E_{l,2} 60
1,5 W/m²K
Class 1
Class 2A
Class C



SERIES EQUIPMENT

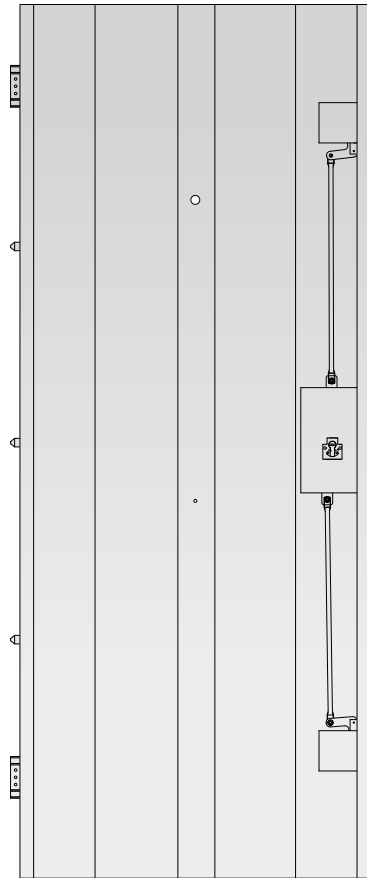
- 86 mm thick galvanized steel sheet.
- PVC or lacquered galvanized steel sheet and frame profiles.
- 3-point safety lock with Ø18 mm bolts.
- Class 7 anti-drill protection in the lock and class 4 in pz cylinder protection.
- Anti-clamp protection system.
- Automatic wind break incorporated in the lower part of the door.
- Two adjustable hinges in height and inclination.
- Three Ø18 mm anti-lever bolts between hinges.
- Accessory box, includes 10-pin safety cylinder with 5 keys + 1 work key, protection shield, restrictive opening knob and mounting hardware.
- Door handle box, includes door handle, door knob and wide-angle peephole (optional).
- The doors are delivered with a peephole perforated and opening limiter unless otherwise.
- Standard measures free passage:
Width 724 / 804 / 904
Height 1954 / 2014 / 2034 / 2134

OPTIONAL EQUIPMENT*

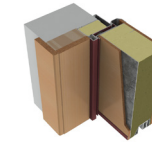
- Pre-framework.
- Wood decorative panels.
- Metal decorative panels.
- Kit of moulding.
- Types of looks.
- Types of cylinders.
- Home automation systems.
- Profiles and panel in other RAL.

*Check the equipment available in the tariff.

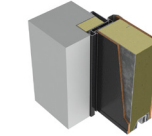
V 1.3



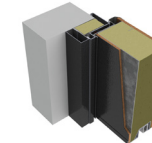
INSTALLATION TYPES



A- Mixed indoor pre-frame with wooden supplement.



B- Metal pre-frame with plate finished with work, for exterior.



D- Metal pre-frame with plate finished with metal cover.

FINISHES

PROFILES



FINISHES DOOR HANDLES

