

## PERFORMANCES

- P1 Resistance to anti-burglary EN 1627 / EN 85160  
P2 Acoustic Insulation EN ISO 10140-2 (Rw)  
P3 Thermal Insulation EN ISO 10077-1 (Ud)

**Degree 3**  
**37 dB**  
**1,5 W/m<sup>2</sup>K**



## SERIES EQUIPMENT

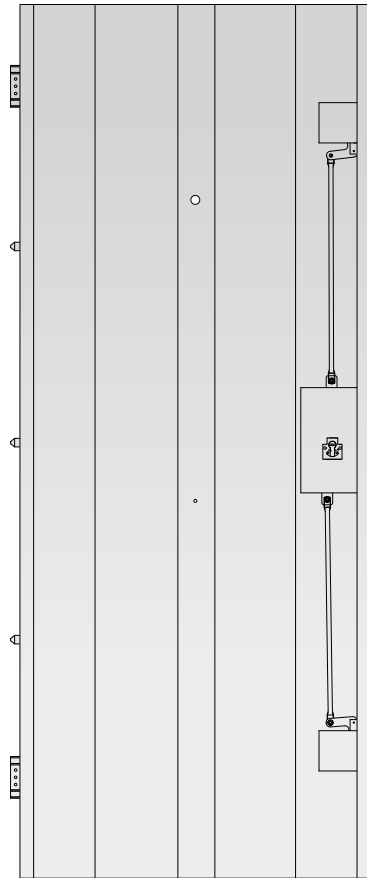
- 86 mm thick galvanized steel sheet.
- PVC or lacquered galvanized steel sheet and frame profiles.
- 3-point safety lock with Ø18 mm bolts.
- Class 7 anti-drill protection in the lock and class 4 in pz cylinder protection.
- Anti-clamp protection system.
- Automatic wind break incorporated in the lower part of the door.
- Two adjustable hinges in height and inclination.
- Three Ø18 mm anti-lever bolts between hinges.
- Accessory box, includes 10-pin safety cylinder with 5 keys + 1 work key, protection shield, restrictive opening knob and mounting hardware.
- Door handle box, includes door handle, door knob and wide-angle peephole (optional).
- The doors are delivered with a peephole perforated and opening limiter unless otherwise.
- Standard measures free passage:  
Width 724 / 804 / 904  
Height 1954 / 2014 / 2034 / 2134

## OPTIONAL EQUIPMENT\*

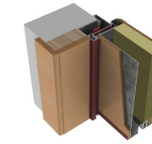
- Pre-framework.
- Wood decorative panels.
- Metal decorative panels.
- Kit of moulding.
- Types of looks.
- Types of cylinders.
- Home automation systems.
- Profiles and panel in other RAL.

\*Check the equipment available in the tariff.

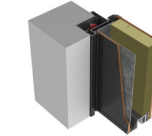
**V 1.3**



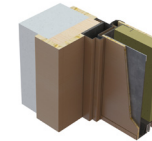
## INSTALLATION TYPES



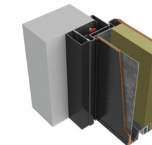
**A-** Mixed indoor pre-frame with wooden supplement.



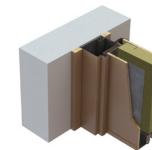
**B-** Metal pre-frame with plate finished with work, for exterior.



**C-** Direct frame in block.



**D-** Metal pre-frame with plate finished with metal cover.



**E-** Corridor frame in block.

## FINISHES

## PROFILES

FINISHES  
DOOR HANDLES